



the future is safer with altro

# Altro Zodiac Smooth™

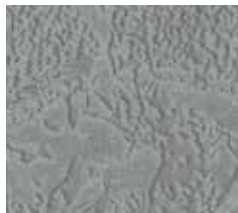
Smooth flooring / Pavimento ligero / Glattbelag



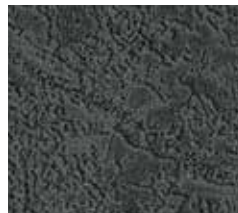
Hologram ZD2001  
WR311 / A1M200 / LRV57



Zenith ZD2002  
WR312 / A1M79 / LRV43



Comet ZD2003  
WR313 / A1M200 / LRV33



Capricorn ZD2004  
WR314 / A1M200 / LRV10



Gravity ZD2005  
WR315 / A1M200 / LRV6



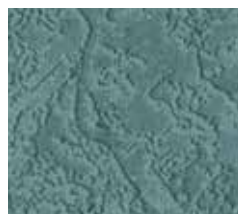
Utopia ZD2006  
WR316 / A1M200 / LRV66



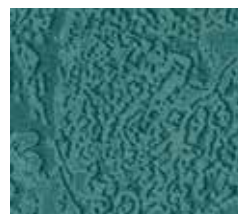
Oxygen ZD2007  
WR317 / A1M200 / LRV41



Libra ZD2008  
WR318 / A1M71 / LRV19



Pisces ZD2009  
WR319 / A1M200 / LRV23



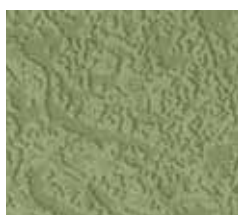
Voyage ZD2010  
WR320 / A1M200 / LRV17



Apex ZD2011  
WR321 / A1M20 / LRV31



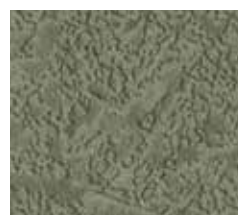
Terrain ZD2012  
WR322 / A1M239 / LRV17



Vision ZD2013  
WR323 / A1M200 / LRV29



Nirvana ZD2014  
WR324 / A1M200 / LRV33



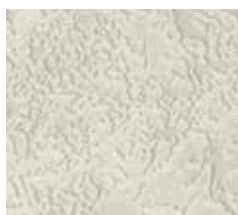
Cosmos ZD2015  
WR325 / A1M200 / LRV24



Aura ZD2016  
WR326 / A1M200 / LRV39



Meteor ZD2017  
WR327 / A1M200 / LRV33



Celestial ZD2018  
WR328 / A1M11 / LRV65



Planet ZD2019  
WR329 / A1M247 / LRV42



Aries ZD2020  
WR330 / A1M41 / LRV12



Spectre ZD2021  
WR331 / A1M134 / LRV16



Flare ZD2022  
WR332 / A1M200 / LRV14



Infinity ZD2023  
WR333 / A1M200 / LRV16

















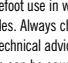


Solar ZD2024  
WR334 / A1M200 / LRV44

Light Reflectance Values measured in accordance with BS8493:2008. Exact material match with samples cannot be guaranteed.  
No podemos garantizar que el material del suelo de seguridad coincide exactamente con el de las muestras. Eine exakte Übereinstimmung des Materials mit Mustern kann nicht garantiert werden.

Codes: **WR** = weld rod, **A1M** = mastic, **LRV** = light reflectance value.  
Códigos: **WR** = Cordon de soldadura, **A1M** = Mástique, **LRV** = Valor de reflectancia de la luz.  
Abkürzungen: **WR** = Schweißschnüre, **A1M** = Altro Mastic Dichtmasse, **LRV** = Lichtreflexionswert



Flooring type Tipo de pavimento Belagsart		EN ISO 10582	Smooth flooring Pavimento ligero Glattbelag
Classification for use Areas de uso Einsatzbereiche		EN ISO 10874	34 & 43 34 y 43 34 & 43
Slip resistance Resistencia al deslizamiento Rutschsicherheit*		EN 13893 DIN 51130	DS R10 - For lifetime sustainable wet slip resistance please refer to Altro safety flooring
Thickness Espesor total Gesamtdicke		EN ISO 24346	2 mm
Wear layer Capa de uso Nutzschicht		EN ISO 24340	0.7 mm
Flexibility Flexibilidad Flexibilität		EN 435	Pass Conforme bestanden
Weight Peso Flächengewicht		EN ISO 23977	2.66 kg/m <sup>2</sup>
Roll dimensions Dimensiones del rollo Rollenabmessungen		EN ISO 24341	2 m x 20 m = 40 m <sup>2</sup>
Light fastness Resistencia a la luz Lichtechtheit		EN ISO 105-B02	≥6
Sound insulation Aislamiento acústico Trittschall		ISO 140-8	ca. 4dB
Wear resistance Abrasión Verschleißverhalten		EN 660-2	Group T
Indentation Punzonamiento Resteindruck		EN ISO 24343-1	≤ 0.10mm
Fire performance Reacción al fuego Brandverhalten		EN 13501-1 EN ISO 9239-1 EN ISO 11925-2	Class Bfl s1 ≥8kw/m <sup>2</sup> pass Clase Bfl s1 ≥8kw/m <sup>2</sup> conforme Klasse Bfl-s1 ≥8kW/m <sup>2</sup> , bestanden
Chemical resistance Resistencia a los productos químicos Chemikalieneinwirkung**		EN 423	Good Buena beständig
Castor chair abrasion Huellas de ruedas de sillas Stuhlrollenbeanspruchung		EN 425	Pass Conforme geeignet
Under floor heating Calefacción por el suelo Fußbodenheizung		EN 12667	Suitable Apto geeignet
Electrical behaviours Características eléctricas Elektrisches Verhalten		EN 1815	≤ 2kV Antistatic ≤ 2kV Antiestáticas ≤ 2kV antistatisch

All Altro construction vinyl flooring contains bio-plasticiser and is phthalate-free.

\* We recommend the use of Altro Aquarius™ for combined shoe and barefoot use in wet and dry areas such as hospital bathrooms and Altro Marine™ 20 / T20 for barefoot use in shower cubicles. Always check local regulations.

\*\* Caution ketone / aromatic solvents. Please contact Altro for further technical advice regarding staining and chemical resistance. Certain chemicals may cause staining of vinyl. Traffic stain can be caused by oil residue, certain cleaning agents, asphalt and anti-oxidants in some types of rubber.

#### Installation and Maintenance

All Installations in accordance with Altro safety flooring instructions and local codes of practice.

Please refer to Altro cleaning card for maintenance advice. Failure to install and maintain Altro flooring in accordance with installation instructions can affect its performance and slip resistance. Floors should be protected from other trades and thoroughly cleaned before handover.

All information is correct at the time of print and is subject to change without prior notice.

Visit us at [www.altro.com](http://www.altro.com) for more information and updates.



Distributor label

For further technical information please visit [www.altro.com](http://www.altro.com) / [www.asf.com.au](http://www.asf.com.au)  
Si desea obtener más información técnica, visite [www.altroscandess.com](http://www.altroscandess.com)  
Weitere technische Informationen finden Sie auf unserer Website [www.altro.de](http://www.altro.de)

**Gulvbranchens**  
Vädrumskontroll

**Gulvbranchens**  
Garanti for gode gulve



Altro Limited a company certified by SGS to ISO 9001 and ISO 14001.



+44 1462 707700  
+34 91 549 52 30  
49 (0) 40 514949-0  
+45 36 78 90 33  
+46 (0)40 31 22 00

Altro Ltd. Works Road  
Letchworth Garden City  
SG6 1NW, United Kingdom