



altro

the future is safer with altro

Altro Walkway™ 20 / VM20

Altro XpressLay™

Safety flooring

Nestlé

1,200m² Altro Walkway 20 / VM20

www.altro.com

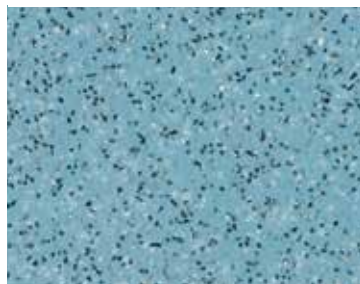


the future is safer with altro

Altro Walkway™ 20 / VM20 Adhered safety flooring

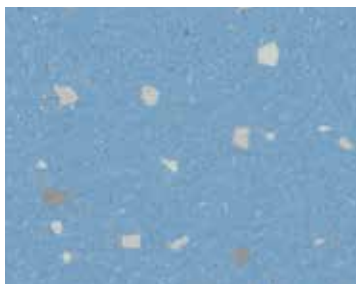
Altro XpressLay™ Adhesive-free safety flooring

Both ranges available in all colours shown, Altro Walkway part numbers shown in black, Altro XpressLay shown in blue.



WR155 / AIM135 / LRV 31

Walkway Waterfall VM20912
XpressLay Waterfall XL22912



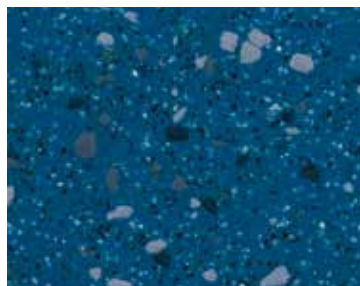
WR309 / AIM309 / LRV 31

Walkway Fresco VMI2017P
XpressLay Fresco XLI2217P



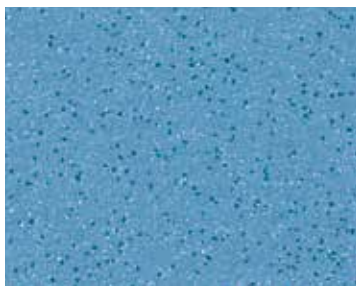
WR71 / AIM71 / LRV 22

Walkway Blue VM20412
XpressLay Blue XL22412



WR71 / AIM71 / LRV 22

Walkway River VMI2057
XpressLay River XLI2257



WR288 / AIM71 / LRV 22

Walkway Stream VM2001P
XpressLay Stream XL2201P



WR286 / AIM286 / LRV 17

Walkway Lupin VMI2059
XpressLay Lupin XLI2259



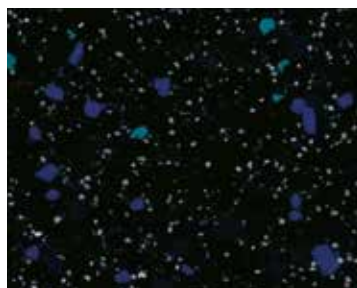
WR72 / AIM72 / LRV 11

Walkway Midnight VM20421
XpressLay Midnight XL22421



WR72 / AIM72 / LRV 9

Walkway Runway VM2006P
XpressLay Runway XL2206P



WR72 / AIM72 / LRV 10

Walkway Nightfall VMI2056
XpressLay Nightfall XLI2256



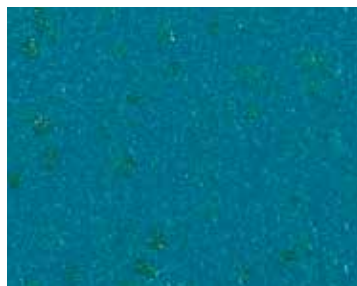
WR277 / AIM100 / LRV 5

Walkway Pitch VM2020P
XpressLay Pitch XL2220P



WR100 / AIM100 / LRV 6

Walkway Coal VMI2058
XpressLay Coal XLI2258



WR302 / AIM302 / LRV 13

Walkway Mallard VMI2013P
XpressLay Mallard XLI2213P

* SD version available, product code VM20153SD, this product features Altro Easyclean Original. * Versión SD disponible, código VM20153SD.

Este producto mantiene el Altro Easyclean Original. * SD version verfügbar, Artikelnummer VM20153SD, dieses Produkt hat unsere Standard Easyclean Oberfläche.

Light Reflectance Values measured in accordance with BS8493:2008. Valores de reflexión de la luz medidos conforme a la BS8493:2008.

Lichtreflexionswerte werden ermittelt nach BS8493:2008.

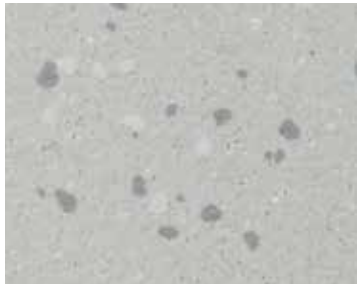
Altro VM20 / VM20 Sicherheitsbodenbelag / Suelo de seguridad pegado

Altro XpressLay lose verlegbarer Sicherheitsbodenbelag / Suelo de seguridad sin adhesivo

Beide Serien sind in allen dargestellten Farben verfügbar. Altro Walkway Artikelnummern werden in schwarz, Altro Xpresslay Artikelnummern in blau dargestellt.

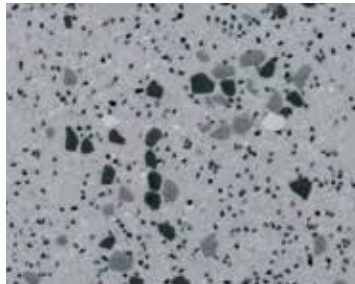
Ambos productos están disponibles en toda la gama de colores. Códigos del Altro Walkway mostrados en negro.

Altro XpressLay mostrado en azul.



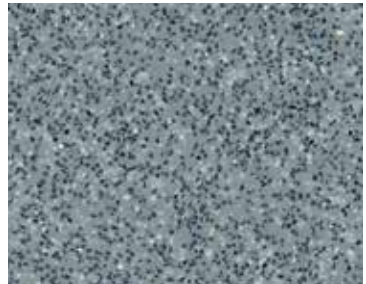
WR287 / AIM79 / LRV 45

Walkway Streetlight VM2005P
XpressLay Streetlight XLI2205P



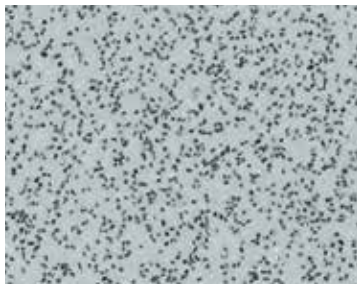
WR79 / AIM191 / LRV 44

Walkway Blizzard VM2055
XpressLay Blizzard XLI2255



WR81 / AIM81 / LRV 27

Walkway Fog VM20153*
XpressLay Fog XLI22153



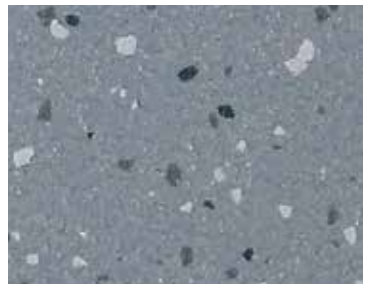
WR79 / AIM191 / LRV 41

Walkway Cloud VM2014
XpressLay Cloud XLI2214



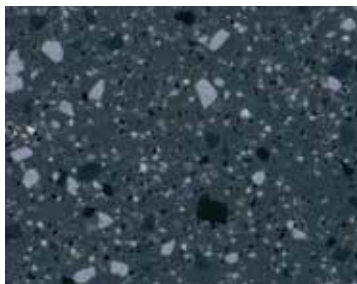
WR261 / AIM81 / LRV 27

Walkway Temple VM2009P
XpressLay Temple XLI2209P



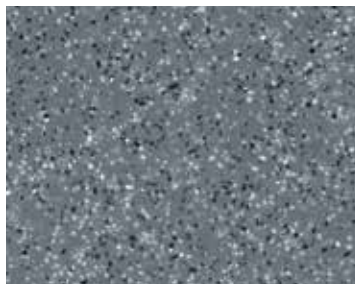
WR84 / AIM84 / LRV 23

Walkway Rock VMI2004P
XpressLay Rock XLI2204P



WR86 / AIM86 / LRV 20

Walkway Whale VMI2054
XpressLay Whale XLI2254



WR86 / AIM86 / LRV 21

Walkway Dolphin VM2010
XpressLay Dolphin XLI2210



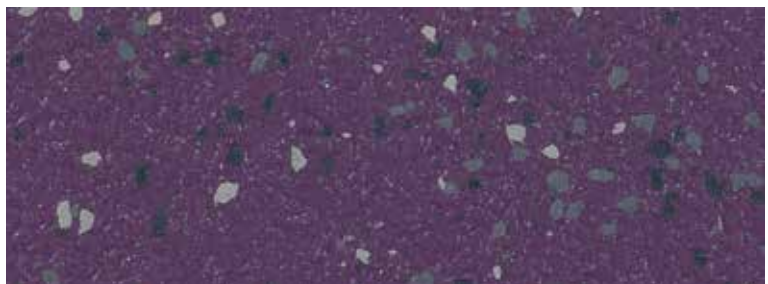
WR83 / AIM83 / LRV 14

Walkway Pavement VMI2007P
XpressLay Pavement XLI2207P



WR100 / AIM100 / LRV 6

Walkway Black VM20892
XpressLay Black XLI22892



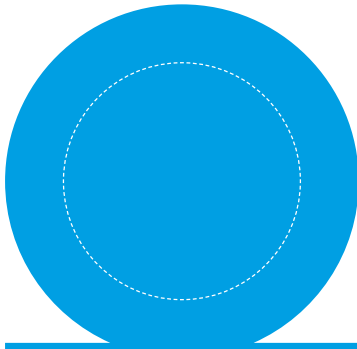
WR310 / AIM35 / LRV 10

Walkway Silk VMI2003P
XpressLay Silk XLI2203P

Exact material match with samples cannot be guaranteed.

No podemos garantizar que el color del suelo de seguridad coincida exactamente con el de las muestras.

Eine exakte Übereinstimmung des Materials mit Mustern kann nicht garantiert werden.

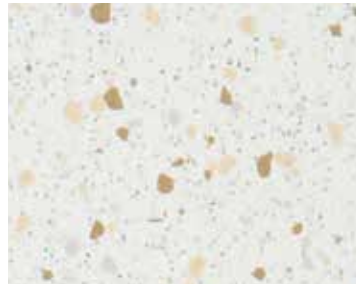


Altro XpressLay

Adhesive-free safety flooring
Swatch above shows underside emboss of Altro XpressLay.

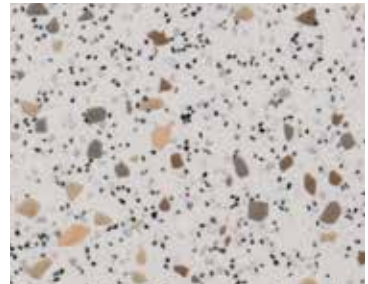
Adhesive-free safety flooring
Das obige Musterstück zeigt die genoppte Unterseite von Altro XpressLay.

Adhesive-free safety flooring
Swatch arriba muestra el relieve envés del Altro XpressLay.



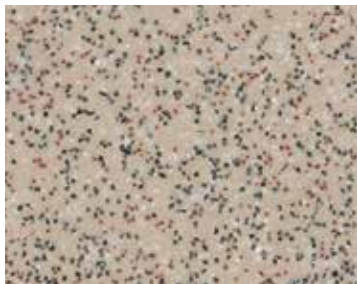
WR291 / A1M01 / LRV 75

Walkway Swan VMI2012P
XpressLay Swan XLI2212P



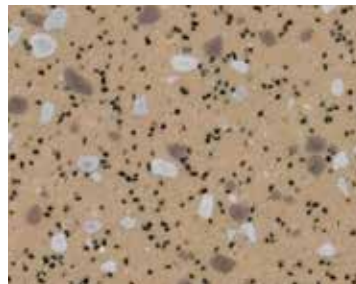
WR105 / A1M01 / LRV 61

Walkway Winter VMI2053
XpressLay Winter XLI2253



WR20 / A1M20 / LRV 37

Walkway Bone VM20215
XpressLay Bone XL22215



WR20 / A1M20 / LRV 40

Walkway Sand VMI2051
XpressLay Sand XLI2251



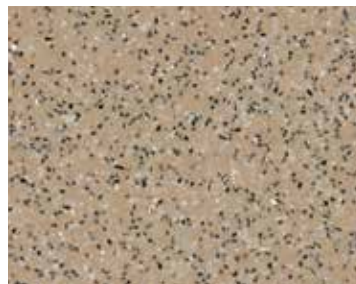
WR289 / A1M265 / LRV 40

Walkway Minster VM2018P
XpressLay Minster XL2218P



WR297 / A1M20 / LRV 41

Walkway Arena VM2019P
XpressLay Arena XL2219P



WR146 / A1M20 / LRV 30

Walkway Biscuit VM20907
XpressLay Biscuit XL22907



WR305 / A1M239 / LRV 23

Walkway Monument VMI2008P
XpressLay Monument XLI2208P



WR153 / A1M239 / LRV 17

Walkway Tundra VM20910
XpressLay Tundra XL22910



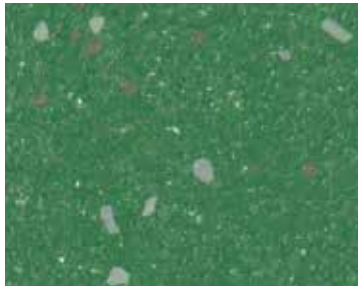
WR153 / A1M239 / LRV 19

Walkway Savannah VMI2050
XpressLay Savannah XLI2250

Codes: **WR** = weld rod, **A1M** = mastic, **LRV** = light reflectance value.

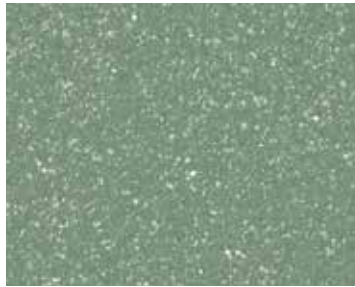
Códigos: **WR** = Cordón de soldadura, **A1M** = Mástico, **LRV** = Valor de Reflexión de la Luz.

Abkürzungen: **WR** = Schweißschnüre, **A1M** = Altro Mastic Dichtmasse, **LRV** = Lichtreflexionswert.



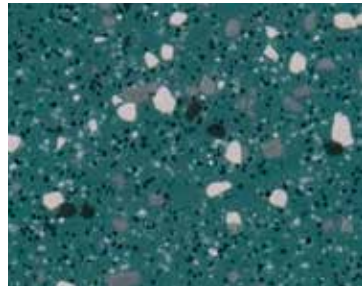
WR308 / AIM308 / LRV 18

Walkway Gecko VMI2002P
XpressLay Gecko XLI2202P



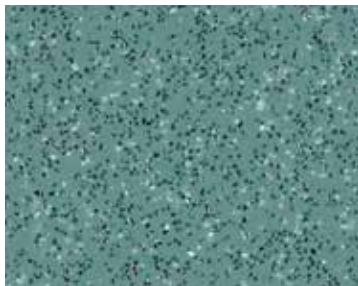
WR262 / AIM154 / LRV 23

Walkway Roof Garden VM2000P
XpressLay Roof Garden XL2200P



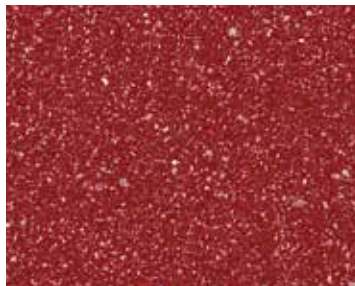
WR52 / AIM52 / LRV 26

Walkway Tarragon VMI2052
XpressLay Tarragon XLI2252



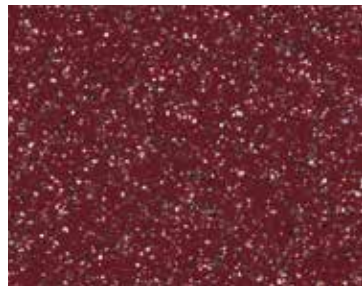
WR52 / AIM52 / LRV 24

Walkway Skyline VM20332
XpressLay Skyline XL22332



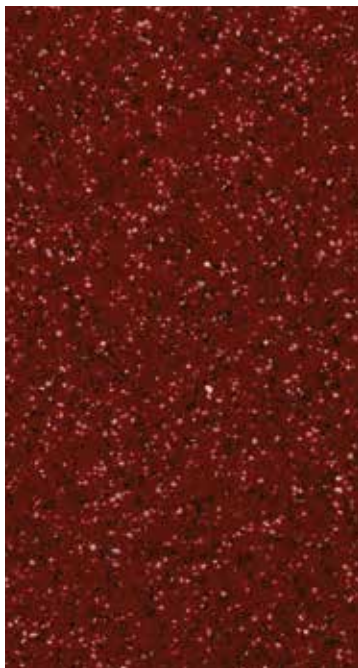
WR248 / AIM238 / LRV 9

Walkway Forge VM2015P
XpressLay Forge XL2215P



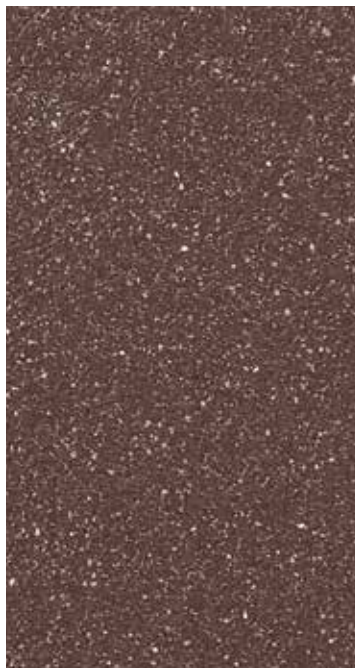
WR148 / AIM148 / LRV 10

Walkway Cherry VM20920
XpressLay Cherry XL22920



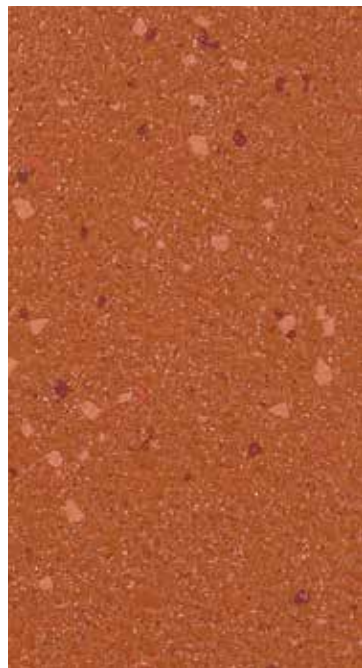
WR42 / AIM42 / LRV 14

Walkway Tango VM2031
XpressLay Tango XL2231



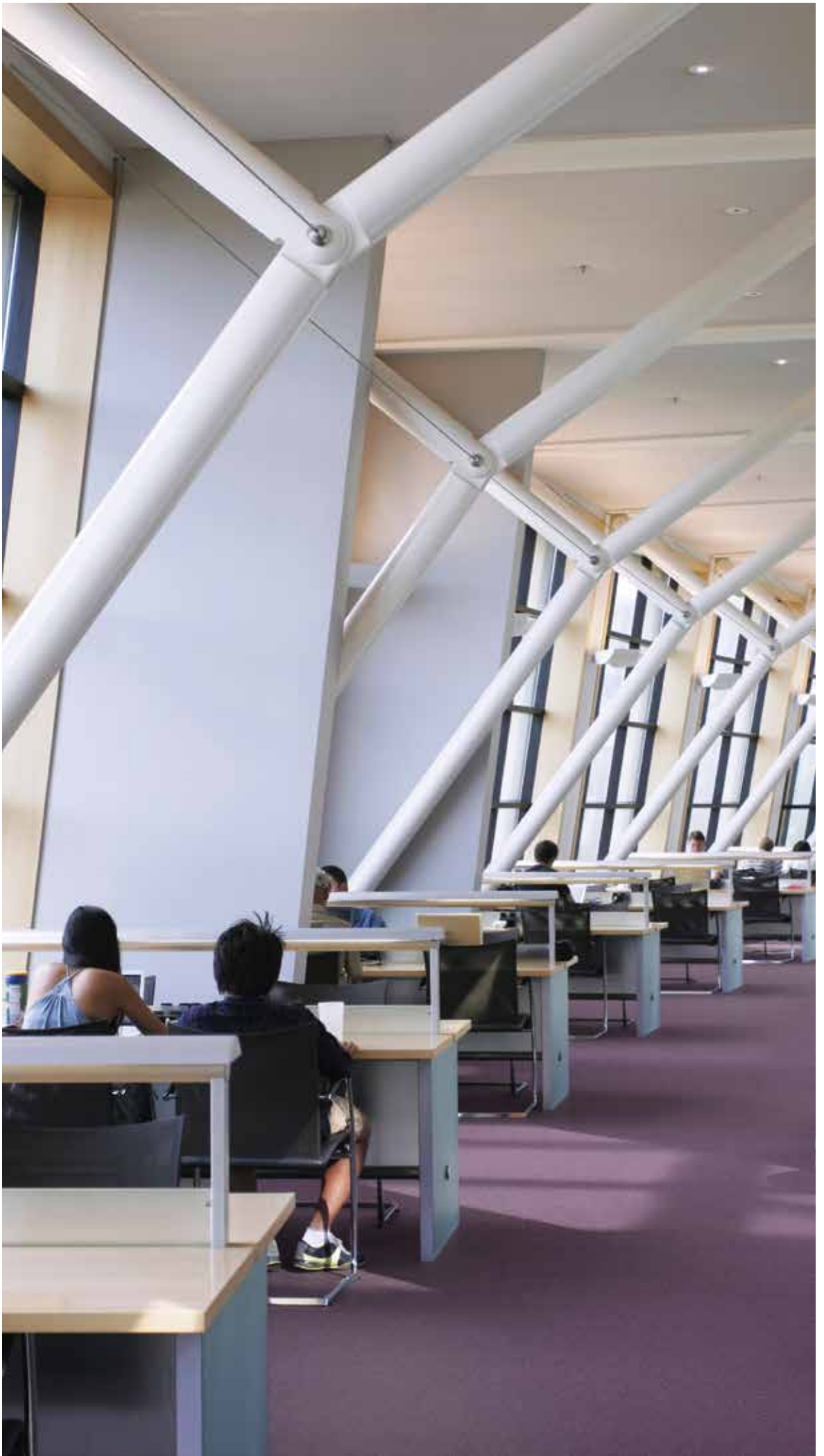
WR62 / AIM62 / LRV 10

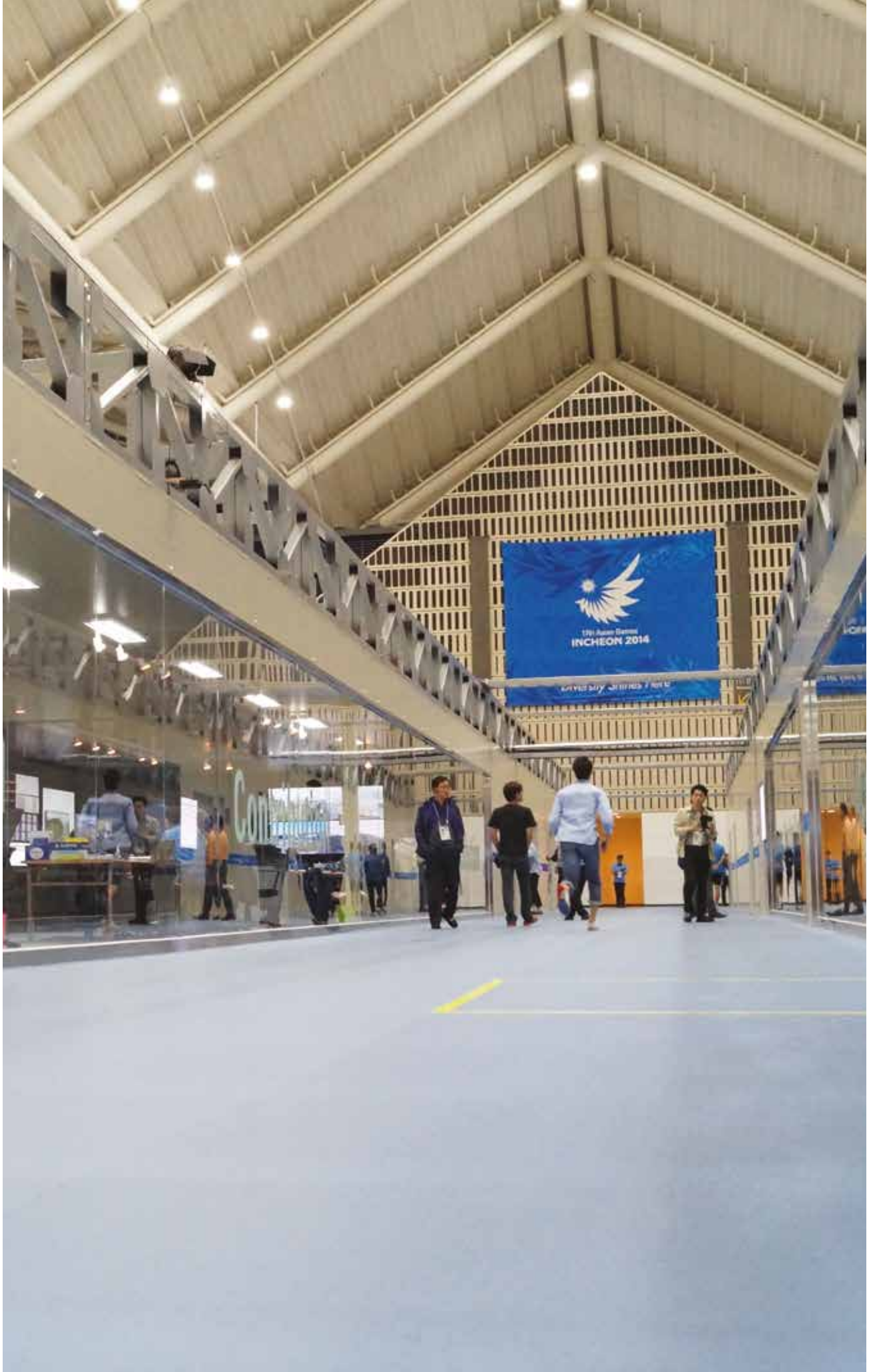
Walkway Gallery VM2011P
XpressLay Gallery XL2211P



WR300 / AIM42 / LRV 13

Walkway Signal VMI2016P
XpressLay Signal XLI2216P





2014 Asian Games
1,700m² Altro XpressLay

Flooring type Tipo de pavimento Belagsart		EN 13845 / EN 13553	Safety flooring Suelo de seguridad antideslizante Sicherheitsbodenbelag		
Classification for use Areas de uso Einsatzbereiche		EN 685	34 & 43 34 y 43 34 & 43		
Slip resistance Resistencia al deslizamiento Rutschsicherheit*		PTV EN 13845 EN 13893 DIN 51130	≥ 36 ESf DS R10		
Thickness Espesor total Gesamtdicke		EN 428	VM20 2mm XpressLay 2.2mm		
Wear layer Capa de uso Nutzschicht		EN 429	VM20 2mm XpressLay 0.8mm		
Flexibility Flexibilidad Flexibilität		EN 435	Pass Conforme bestanden		
Weight Peso Flächengewicht		EN 430	VM20 2.6 kg/m ² XpressLay 2.6 kg/m ²		
Roll dimensions Dimensiones del rollo Rollenabmessungen		EN 426	2.0m x 20.00m - 40m ²		
Light fastness Resistencia a la luz Lichtechtheit		EN 20105-B02	≥6		
Sound insulation Aislamiento acústico Trittschal		ISO 140-8	VM20 5 dB XpressLay 7 dB		
Wear resistance Abrasión Verschleißverhalten		EN13845	≤10% particles lost over 50000 cycles ≤10% de las partículas perdidas en 50.000 ciclos ≤10% Parkittel werden über 50000 Umdrehungen verloren		
Indentation Punzonamiento Resteindruck		EN 433	≤ 0.10mm		
Fire performance Reacción al fuego Brandverhalten		EN 13501-1 EN ISO 9239-1 EN ISO 11925-2	Class Bfl-s1 ≥8kW/m ² pass Clase Bfl-s1 ≥8kW/m ² Conforme Klasse Bfl-s1 ≥8kW/m ² , bestanden		
Chemical resistance Resistencia a los productos químicos Chemikalieneinwirkung**		EN 423	Good Buena beständig		
Castor chair abrasion Huellas de sillas de ruedas Stuhlrollenbeanspruchung		EN 425	Pass Conforme geeignet		
Under floor heating Calefacción por el suelo Fußbodenheizung		EN 12667	Suitable Apto geeignet		
Electrical behaviours Características eléctricas Elektrisches Verhalten		EN 1815	EN 1081	≤ 2kV Antistatic ≤ 2kV Antiestáticas ≤ 2kV antistatisch	≤10 ⁹ Ω (VM20SD)

All Altro construction vinyl flooring contains bio-plasticiser and is phthalate-free.

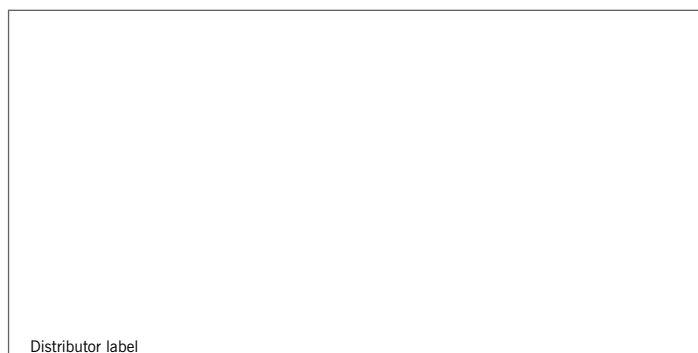
* We recommend the use of an Altro specialist safety flooring solution for combined shoe and barefoot in wet and dry areas such as hospital bathrooms and Altro Marine™ 20 / T20 for barefoot use in shower cubicles. Always check local regulations.

** Caution ketone / aromatic solvents. Please contact Altro for further technical advice regarding staining and chemical resistance. Certain chemicals may cause staining of vinyl. Traffic stain can be caused by oil residue, certain cleaning agents, asphalt and anti-oxidants in some types of rubber.

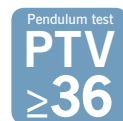
Installation and Maintenance

Altro XpressLay is loose laid with all joints and perimeters adhered to the sub floor with Altro Looselayer™ double sided tape. Altro XpressLay should be installed in accordance with Altro XpressLay fitting instructions and local codes of practice. Please refer to Altro cleaning card for maintenance advice. Failure to install and maintain Altro flooring in accordance with installation instructions can affect its performance and slip resistance. Floors should be protected from other trades and thoroughly cleaned before handover.

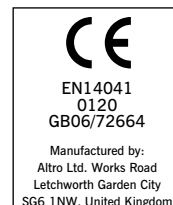
All information is correct at the time of print and is subject to change without prior notice. Visit us at www.altro.com for more information and updates.



Distributor label



Altro Limited a company certified by SGS to ISO 9001 and ISO 14001.



For further technical information please visit www.altro.com / www.asf.com.au
Si desea obtener más información técnica, visite www.altroscandess.es
Weitere technische Informationen finden Sie auf unserer Website www.altro.de