



altro

**New  
AltroBead™  
Technology**

Giving a unique,  
soft and domestic look!

**Altro Pisces™**  
Shoe and barefoot  
safety flooring

[www.altro.com](http://www.altro.com)

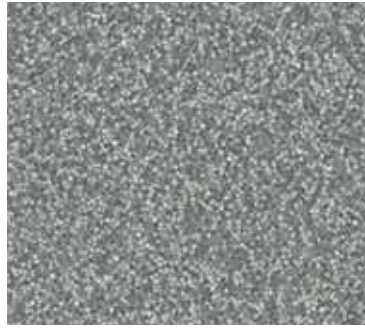
the future is safer with altro

# Altro Pisces™

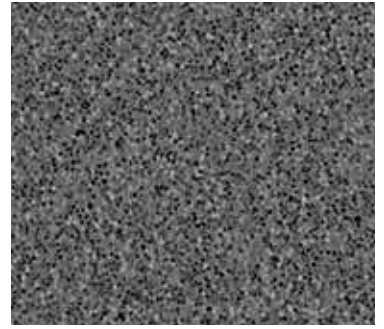
Shoe and barefoot safety flooring



Jellyfish SB2005  
WR388 / A1M388 / LRV 46



Porthole SB2007  
WR390 / A1M390 / LRV 30



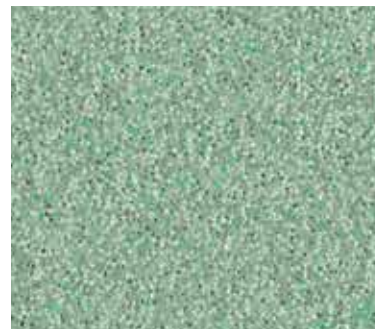
Anchor SB2008  
WR391 / A1M82 / LRV 16



Deckchair SB2013  
WR396 / A1M396 / LRV 50



Sea Urchin SB2014  
WR397 / A1M397 / LRV 34



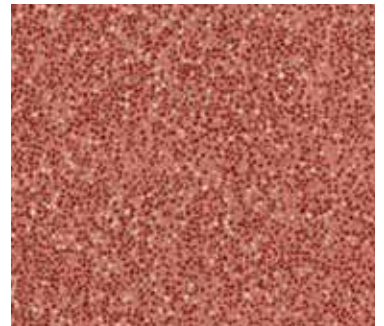
Windbreak SB2016  
WR399 / A1M399 / LRV 38



Seahorse SB2011  
WR394 / A1M394 / LRV 47



Beach Hut SB2012  
WR395 / A1M395 / LRV 37



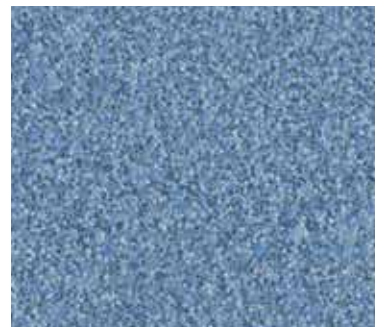
Starfish SB2010  
WR393 / A1M393 / LRV 21



Fisherman SB2009  
WR392 / A1M392 / LRV 48



Breakwater SB2003  
WR386 / A1M20 / LRV 42

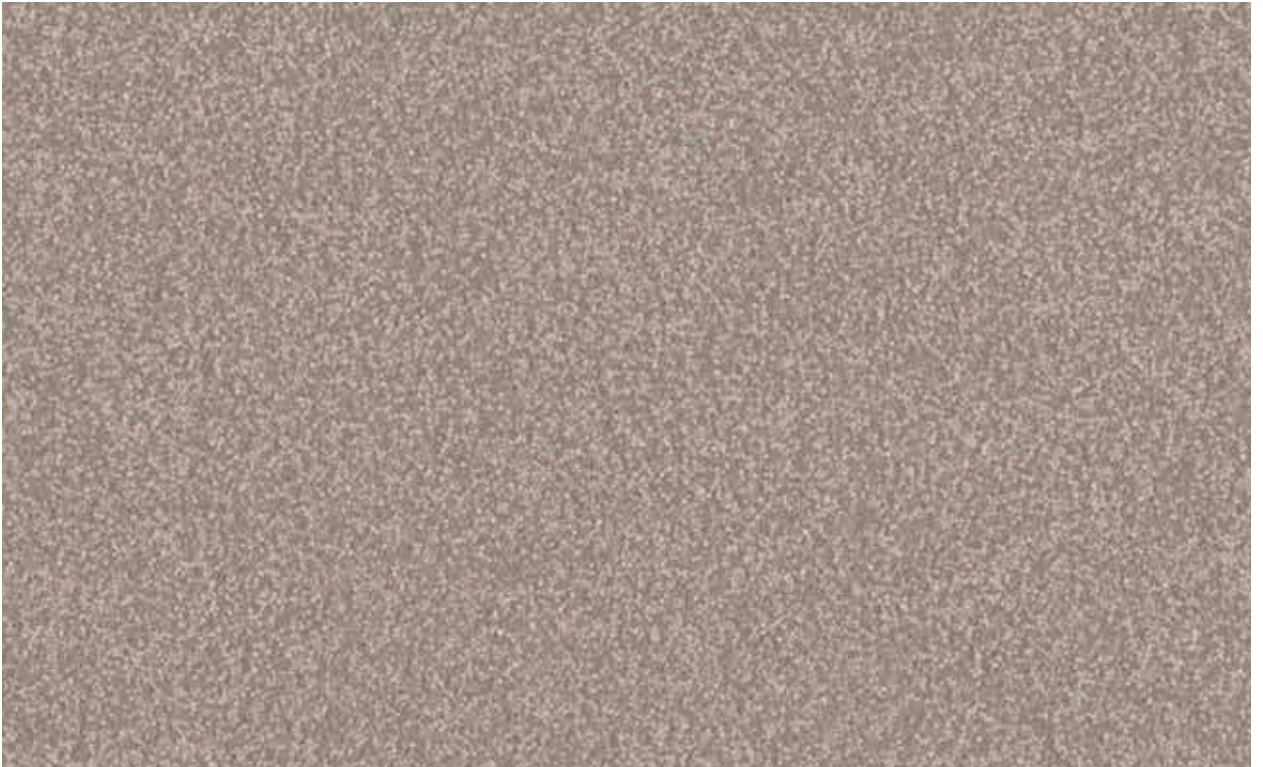


Houseboat SB2015  
WR398 / A1M398 / LRV 25

Light Reflectance Values measured in accordance with BS8493:2008.

Exact material match with samples cannot be guaranteed.

Codes: WR = weld rod, A1M = mastic, LRV = light reflectance value



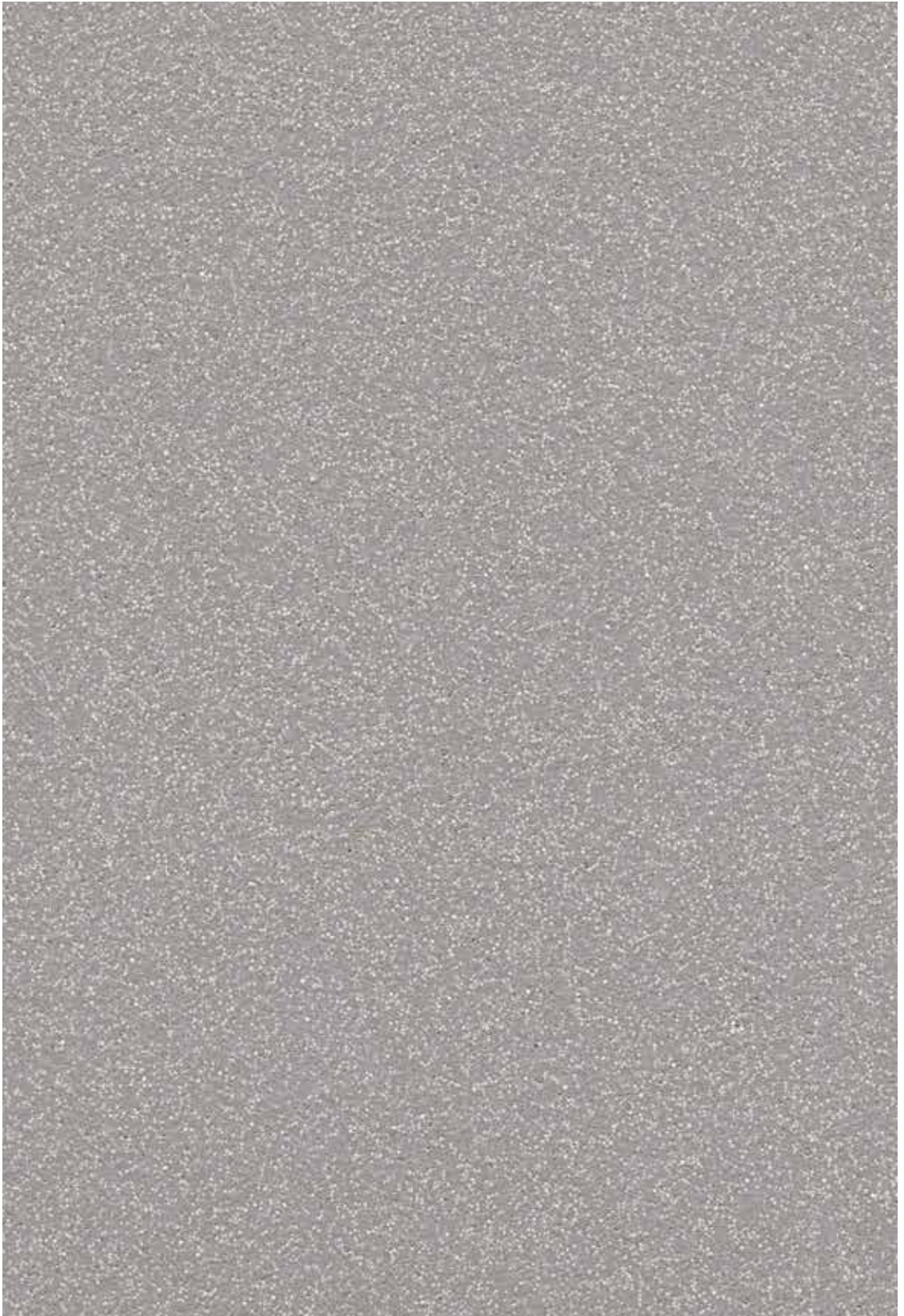
Driftwood SB2004  
WR387 / A1M387 / LRV 32



Lighthouse SB2001  
WR291 / A1M01 / LRV 70



Cuttlefish SB2002  
WR385 / A1M385 / LRV 50



Shoreline SB2006  
WR389 / A1M389 / LRV 38



Missing my brochure?  
Visit [www.altro.co.uk/Altro-Pisces](http://www.altro.co.uk/Altro-Pisces)  
to discover more

Typical applications:

**Bathrooms. Showers. Wet environments in social care; home adaptations, social housing. Student accommodation. Swimming pool surrounds. Saunas. Spas. Changing rooms\*.**



### Slip resistance

Tested with:

- Soapy water**
- Shower gel**
- Talcum powder**
- Conditioner**
- Glycerine**

Suitable for:

- **Wet and dry areas**
- **All shoes or bare feet**









\*In changing rooms where spikes and studs are used, we recommend Altro Atlas™ 40

Looks great with:

**Altro Whiterock White™ / Altro Whiterock Satins™ / Altro Whiterock Chameleon™ / Altro Whiterock Digiclad™ / Altro Suprema™ / Altro Wood Safety™**

## **i** Technical information

Flooring type	Slip resistance	Thickness	Weight	Roll dimensions	Fire performance
					
EN 13845 EN 13553	TRRL EN 13845 EN 13893 DIN 51130 DIN 51097	EN 428	EN 430	EN 426	EN 13501-1 EN ISO 9239-1 EN ISO 11925-2
<b>Safety flooring</b>	≥ 50 (slider 96) ESf & ESb DS R11 Class B	2 mm	2.6 kg/m <sup>2</sup>	2 m x 20 m - 40 m <sup>2</sup>	Bfl s1 ≥8kW/m <sup>2</sup> pass
<p><b>i</b> For further technical information please visit <a href="http://www.altro.com">www.altro.com</a></p>				<p>Patent No. GB 2 462 167 Patent No. GB 2 496 644</p>	



### Sustainability

Altro are the first safety flooring manufacturer to recycle traditional safety flooring in-house



A+ BRE Generic Green Guide Rating for safety flooring, full details available at [www.thegreenguide.org.uk](http://www.thegreenguide.org.uk)



+44 (0) 1462 707 700

[www.altro.com](http://www.altro.com)

[enquiries@altro.com](mailto:enquiries@altro.com)



Altro Limited a company certified by SGS to ISO 9001 and ISO 14001.

### **i** Installation and Maintenance

All Installations in accordance with Altro safety flooring instructions and local codes of practice. Please refer to Altro cleaning card for maintenance information. Failure to install and maintain Altro flooring in accordance with installation instructions can affect its performance and slip resistance. Floors should be protected from other trades and thoroughly cleaned before handover. Traffic stain can be caused by oil residue, certain cleaning agents, asphalt and anti-oxidants in some types of rubber.

### Caution

Ketone / aromatic solvents. Please contact Altro for further technical guidance regarding staining and chemical resistance. Certain chemicals may cause staining of vinyl.