



MONTAGE: CLARET

M
Montage
Creative Range

Heckmondwike Creative Range

Creative Range

Features and Benefits

- British made
- Distinctive surface pattern
- Will not ravel or fray
- Thermal properties conserve heat
- Acoustic properties reduce noise pollution
- Low maintenance costs
- Low installation costs



Products	Page
Array	22 - 23
Night Sky	24 - 25
Montage	26 - 27



Peacock



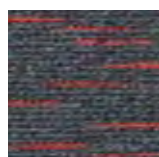
Copper



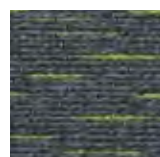
Blue



Black



Red



Lime



Purple

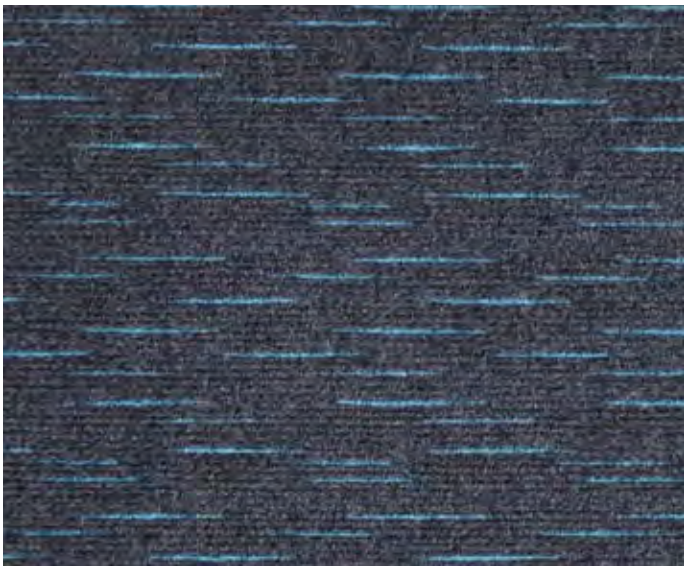


Magenta

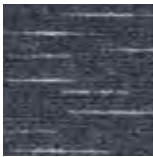
Heckmondwike Array

Creative Range

With a smart linear pattern in a choice of twelve vibrant accent shades, Array is a fresh new take on this popular design trend. Perfect for commercial and education settings, Array blends easily with contrasting colour options from the Broadrib range to create contemporary and high-performance installations.



Fuchsia




Marble



Emerald



Violet

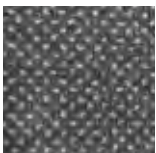
Specification	Array
Fibre Construction	85% Polypropylene, 15% Polyamide
Colour Fastness	Light (BS EN ISO 105:B02) 6 Wet Rubbing (BS EN ISO 105:B01) 4-5 Dry Rubbing (BS EN ISO 105:X12) 4-5
Flammability	BS5287 Assessment and labelling of Textile Floorcoverings tested to BS4790 (Hot Metal Nut Test) - Low Radius of Char
	BS EN 13501:2002 Euroclass Bfl-s1
Antistatic	Suitable for use in computer rooms
Formats	Tiles 
Backing	Bitumen
Size	50cm x 50cm
Weight	4075gm metre ²
Thickness	8.5mm
BREEAM Rating	A+ (Certificate 363 for schools) A (Certificate 363 for offices & retail)



N

Night Sky

Creative Range



Steel



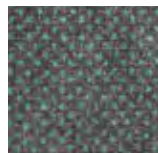
Violet



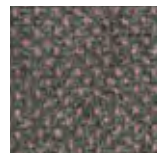
Blue



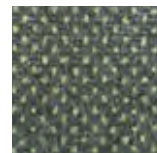
Copper



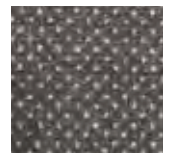
Emerald



Fuchsia



Lime



Peacock


Heckmondwike Night Sky

Creative Range

Night Sky creates even more choice for designers by providing a contemporary twist on the more traditional carpet tile. Night Sky partners perfectly with the Broadrib range and is perfect for any commercial setting.



Red

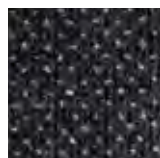
Specification	Night Sky
Fibre Construction	77% Polypropylene, 15% Polyamide, 7% Recycled Polyester
Colour Fastness	Light (BS EN ISO 105:B02) 6 Wet Rubbing (BS EN ISO 105:B01) 4-5 Dry Rubbing (BS EN ISO 105:X12) 4-5
Flammability	BS5287 Assessment and labelling of Textile Floorcoverings tested to BS4790 (Hot Metal Nut Test) - Low Radius of Char
	BS EN 13501:2002 Euroclass C _{fl} -s1
Antistatic	Suitable for use in computer rooms
Formats	Tiles 
Backing	Bitumen
Size	50cm x 50cm
Weight	4075gm metre ²
Thickness	8.5mm



M

Montage

Creative Range



Anthracite



Flint



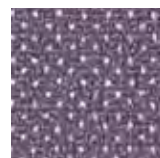
Indigo



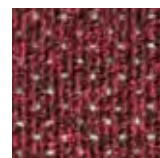
Sapphire



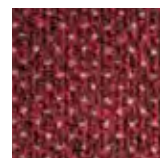
Blueberry



Plum



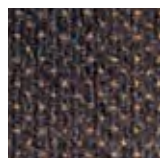
Claret



Ruby



Slate



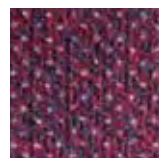
Bronzite



Cobalt



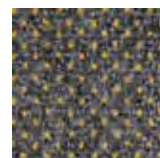
Pacific Blue



Magenta



Cerise



Granite

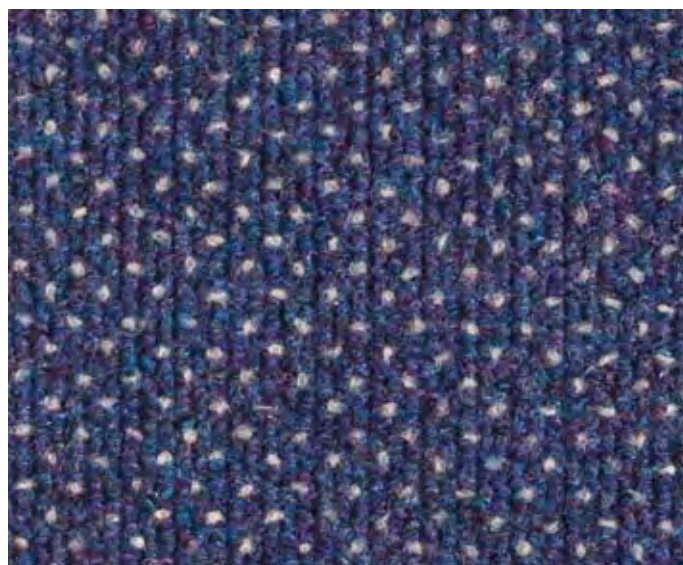




Turquoise

Heckmondwike Montage

Creative Range

Innovative Montage with its distinctive, random textured, surface design is specified for many education and commercial projects where aesthetic appearance and performance are equally important. With a wide range of colour options, Montage is a creative floor finish that looks great in the most demanding environments.



Specification	Montage	
Fibre Construction (Sheet)	45% Polypropylene, 30% Polyamide, 25% Modacrylic	
Fibre Construction (Tile)	85% Polypropylene, 15% Polyamide	
Colour Fastness	Light (BS EN ISO 105:B02) 6 Wet Rubbing (BS EN ISO 105:B01) 4-5 Dry Rubbing (BS EN ISO 105:X12) 4-5	
Flammability	BS5287 Assessment and labelling of Textile Floorcoverings tested to BS4790 (Hot Metal Nut Test) - Low Radius of Char	
	BS EN 13501:2002 Euroclass C _{fl} -s1 (Sheet) Euroclass B _{fl} -s1 (Tile)	
Antistatic	Suitable for use in computer rooms	
Formats	Sheet 	Tiles 
Backing	-	Bitumen
Size	4 metre	50cm x 50cm
Weight	1075gm metre ²	4075gm metre ²
Thickness	8mm	8.5mm
BREEAM Rating	A+ (Certificate 363 for schools) A (Certificate 363 for offices & retail)	A+ (Certificate 363 for schools) A (Certificate 363 for offices & retail)